

MECHANICAL EQUIPMENT

Products

Air Conditioning & HVAC

Rubber Mounts

Type ND

Type ND Rubber Mounts



Type ND mounts are one-piece mouldings with metal parts completely covered by rubber for corrosion protection. The tops and bases have a ribbed pattern to improve grip. Set screws and washers are supplied for bolting to the equipment. Although bolt holes are provided in case they are required for safety, in practice bolting to the floor is not necessary.

For applications that do not require the extra deflection of steel springs, Mason Industries *Type ND Rubber Mounts* are efficient, inexpensive and easy to install. The Type ND mounts were originally designed by Mason Industries, Inc in the USA in the 1950's and improved over the years and now also manufactured locally by ACTOM Mechanical Equipment.

ND Mounts Key Notes

- All mounts are double deflection
- Offer more than three times the deflection of pads
- Prevent noise and high frequency
- Isolate a wide range of equipment
- Supplied with cap screw and washer
- Bottom friction surface makes bolting unnecessary in most installations
- Stocked in natural rubber
- Conservatively rated to prevent overloading

Markets

- Air conditioning
- Industrial



Applications

- Fans
- Pumps
- Compressors
- Stationary Gen Sets
- Chillers
- Aircon units
- Motors

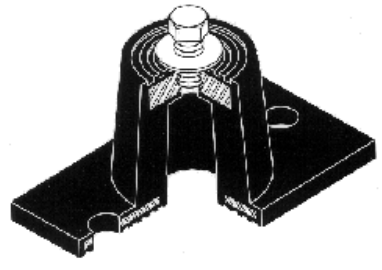
Load & Deflection

The simple design loads the rubber both in shear and compression to produce a straight line load – deflection curve. Although designed for high static deflection Type ND mounts are conservatively rated to prevent overloading.

Material

Most sizes are stocked in natural rubber for superior dynamic properties, except type NDE which is stocked in neoprene (chloroprene) for better oil resistance. The natural rubber grades used are compounded with additives to enhance resistance to oxidation, ozone and sunlight.

Over 50,000 Type ND mounts are in service in South Africa. They are not recommended for mobile, trailer-mounted or marine applications. They are efficient when loaded vertically in compression, but are not designed to be heavily loaded laterally.

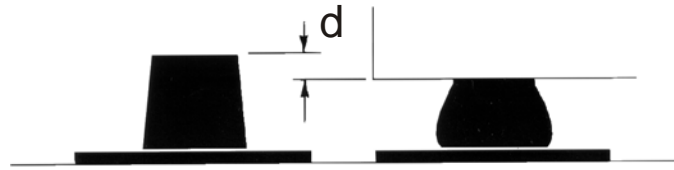


Type ND mounts can also be used (without the set screw) under flat-based machines in the same way as rubber pads. They will be more efficient than pads and the extra ground clearance may be convenient.

ND mounts can also be used upside down by bolting the flat base of the mount to the equipment.

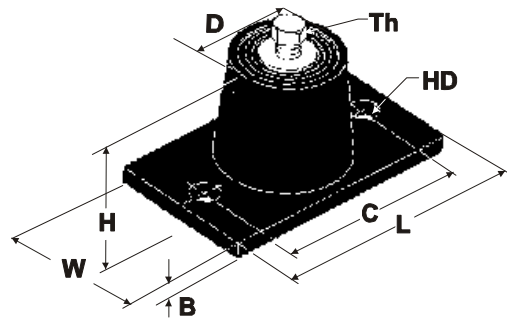


Type ND Rubber Mounts



Selection Table

Size	Hardness [Shore - Color]	Load Range [kg]	Max Deflection – d [mm]
NDA	40 – green 50 – red	20 – 35 30 – 50	5
NDB	40 – green 60 – white	50 – 100 80 – 150	7
NDC	40 – green 50 – red 70 – yellow	70 – 125 110 – 225 200 – 375	10
NDD	50 – red 70 – yellow	300 – 475 400 – 750	10
NDE	70 – yellow	750 – 1500	10



Dimensions in mm

Size	Length L	Width W	Height H	Top Dia D	Thread Size Th	Base Thickness B	Bolt Centres C	Hole Diameter HD
NDA	80	43	35	30	M8	4	59	10.5
NDB	92	58	45	45	M10	5	76	10.5
NDC	140	83	70	65	M12	6	104	14
NDD	158	100	70	88	M12	7	128	14
NDE	186	130	70	115	M12	8	155	14

ACTOM

ACTOM Mechanical Equipment

4 Branch Road, Driehoek, Germiston, 1401 P.O. Box 1300, Germiston, South Africa, 1400
 Tel : +27 11 8783000 Fax : +27 11 8783001 E-mail : arnotavs@actom.co.za